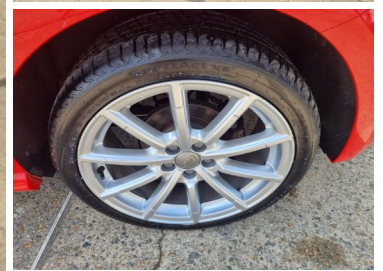


2016(16) Audi A1 1.6 TDI S Line 5dr

SOLD



Engine: Diesel
Body: Hatchback
Gearbox: Manual
Capacity: 1598cc
Colour: Red
Mileage: 68,371
CO²: 98g/km
MPG: 76.3mpg
Top Speed: 124mph
BHP: 114bhp
Insurance Grp: 19E

Howlett of Lavenham
 Sudbury Road
 Lavenham
 Sudbury
 Suffolk, CO10 9PJ

FULL SERVICE HISTORY	17" ALLOYS
AUDI DRIVE SELECT	ELECTRO-MECHANICAL PAS
LOW WASHER FLUID INDICATOR	SERVICE INTERVAL INDICATOR
VOICE CONTROL SYSTEM	ADDITIONAL SD CARD READER
AUDI MUSIC INTERFACE	BLUETOOTH AUDIO STREAMING
DAB DIGITAL RADIO	ADAPTIVE BRAKE LIGHTS
ELECTRIC ADJUSTABLE DOOR MIRRORS	ELECTRIC FRONT WINDOWS
FRONT FOG LIGHTS	ELECTRIC REAR WINDOWS
HEATED DOOR MIRRORS	HEAT INSULATING GLASS
REAR DIFFUSER	HEATED REAR WINDSCREEN
S LINE BODY STYLING	REAR WIPER
	XENON PLUS HEADLIGHTS INCLUDING AUTOMATIC HEADLIGHTS, LED DAYTIME RUNNING LIGHTS, LED REAR LIGHTS, DYNAMIC RANGE CONTROL AND HEADLIGHT WASHERS
12V ACCESSORY SOCKET IN CENTRE CONSOLE	ADJUSTABLE REAR HEAD RESTRAINTS
BLACK CLOTH HEADLINING	CUPHOLDERS IN CENTRE CONSOLE
DOOR SILLS WITH ALUMINIUM INLAIS	FRONT FLOOR MATS
HEIGHT ADJUSTABLE FRONT SEATS	FRONT HEAD RESTRAINTS
	ILLUMINATED GLOVEBOX